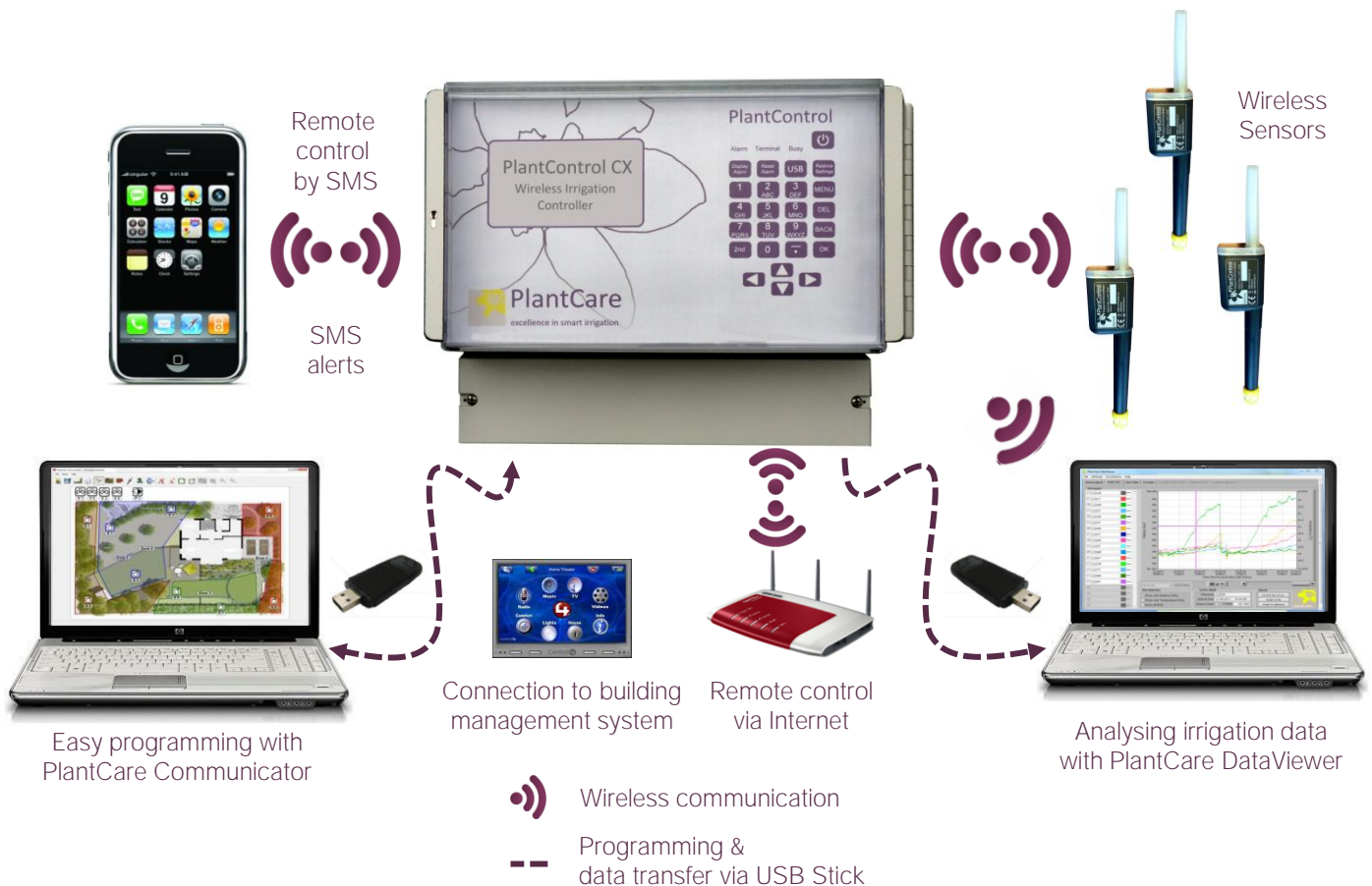


PlantControl CX

Sensor-controlled, wireless irrigation computer with DRA-Technology

Smart & self-learning irrigation computer

PlantControl CX is the world's first self-learning irrigation computer that intelligently evaluates the measurements from up to 60 wireless-linked soil moisture sensors. It not only calculates the correct time to water but also the plants' actual water requirements and automatically adjusts run times according to their growth stages and seasonal temperature fluctuations.



How it works

A PlantControl CX computer irrigates completely automatically. The control system is based on PlantCare's own soil moisture sensor which has been developed and patented worldwide. This totally maintenance-free sensor, which is already in successful use at renowned scientific institutes and companies, measures soil moisture content and soil temperature at regular intervals and transmits these measurements wireless to the control centre.

Irrigation starts automatically as soon as the measured dryness level exceeds the pre-set value and the irrigation time window has been reached. After irrigation, the PlantControl CX determines whether the pre-set target soil moisture level has been reached or not. If necessary, the run time is increased or reduced in order to hit the target moisture in the next irrigation run (DRA-Technology, Dynamic Run-Time Adjustment). This worldwide unique technology ensures optimum water supply for the plants, prevents under- or overwatering and protects precious water resources.

Under control at all times

PlantCare AG's unique communication concept means that the remote monitoring and control of an irrigation system is always guaranteed. DataViewer, PlantCare's special evaluation software, also provides a fast and ideal visual overview as well as an analysis of the irrigation data. Corrections can be made remotely without the need for time-consuming, on-the-spot analyses.

Area of use

- Residential, commercial, sports fields irrigation
- Agriculture irrigation
- Agriculture research



PlantCare Ltd. | Sennhof 13 | CH-8332 Russikon | Switzerland
+41 (0)44 463 77 88 | info@plantcare.ch | www.plantcare.ch

Copyright © 2012 PlantCare Ltd. All rights reserved.



PlantCare
excellence in smart irrigation

PlantControl CX

Sensor-controlled, wireless irrigation computer with DRA-Technology

Smart & environmentally-friendly

- Plants thrive thanks to their stress-free, sensor-controlled irrigation. They are less disease-prone and more pest-resistant.
- Watering only takes place when the soil has reached a specific level of dryness, in other words neither too early nor too late. This ensures a sustainable approach to the use of water.
- With PlantCare DRA-Technology (Dynamic Run-Time Adjustment) irrigation run times are adjusted continuously, thus preventing under- or overwatering. Manual adjustment of the run times due to seasonal temperature fluctuations is no longer necessary.
- Any leaching of fertilizer or other chemicals into the groundwater is consistently prevented, since overwatering is avoided.
- If any of the valves, etc. malfunction, an SMS alarm message is automatically sent to the relevant offices.

General Features

- Up to 32 stations (24V AC or 9V impulse)
- Up to 60 wireless sensors can be connected.
- Weatherproof IP67 housing
- Signal range up to 200 meters, dependent on the type of terrain. This range can be increased up to 800 meters using optional relay stations.
- Measurement of soil moisture levels and soil temperature at freely selectable intervals.
- Speedily reaction to changes in moisture levels.
- Value measured is unaffected by salt or fertilizer content.
- Configure using the large LCD Display or via PlantCare Communicator Software.
- A USB-interface allows to load the irrigation configuration planed on a PC and readout the irrigation data via a USB stick.
- Various optional communication modules for remote data retrieval and remote control are available
- Language setting German/English

Easy configuration with PlantCare Communicator Software

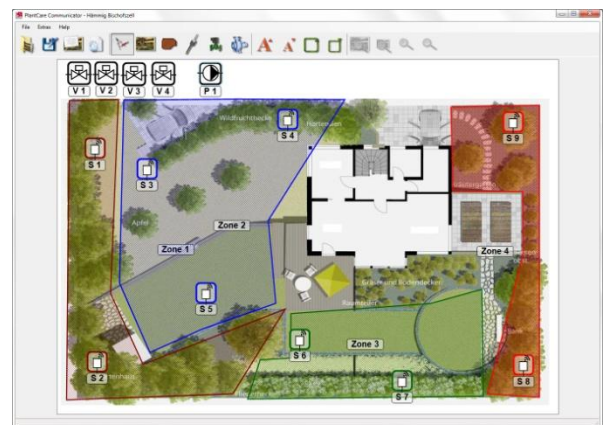
The configuration of a PlantControl CX with the PlantCare Communicator software is easy and convenient. This software allows the definition of irrigation zones and placement of sensors, valves and pumps with one click. The area to be irrigated can be entered as a plan or picture. The configuration data can be downloaded onto a USB stick and then transferred to the PlantControl CX.

Scope of supply

- PlantControl CX irrigation controller, internal transformer

Accessories

- 8-station valve module extendable up to 32 stations
- PlantCare wireless soil moisture sensors incl. batteries
- Solar cell
- Relay station for increasing the radio range
- Communication module for remote data retrieval
- Communication module for remote data retrieval, remote control and SMS alert message
- Communication module for connecting to the building management system
- Communication module for connecting to the internet
- External antenna for enhanced signal reception (for PlantControl CX or GPRS terminal)
- PlantCare DataViewer software for the display and analysis of the irrigation data
- PlantCare Communicator Software for easy programming on a PC
- Replacement tip with felt for sensor



Easy planning with
PlantCare Communicator

Measuring method

PlantCare's worldwide patented sensor technology is based on the microthermic measurement of soil moisture. A specially developed felt material in moisture balance with the soil acts as the interface between the surrounding soil and the sensor. To measure the moisture level, the sensor is briefly heated and the cooling-down time, which varies depending on soil moisture, is determined. The sensor's cooling-down time thus provides a reliable statement of the soil's moisture content.

PlantControl CX

Sensor-controlled, wireless irrigation computer with DRA-Technology

General technical specifications

- Extendable up to 32 stations with 8-station valve modules (24V AC or 9V impulse with solar cell)
- Each station can be programmed individually
- Up to 60 wireless sensors can be connected
- Irrigation days freely selectable / up to 12 start times per day
- Various irrigation modes can be selected per valve: sensor-controlled with constant run time / dynamic run time adjustment (PlantCare DRA-Technology) / timer watering
- Selectable dry level for irrigation start and target moisture level after irrigation
- Moisture measurement in: relative % or hPa (for hPa 6 standard soils to choose from)
- Easy programming on a PC with PlantCare Communicator Software
- Irrigation data analysis with PlantCare DataViewer Software
- Signal range up to 200 meters, dependent on the type of terrain. Can be extended up to 800 meters using optional relay stations.
- Licence-free transmission frequency: 868 MHz or 915 MHz, interchangeable
- Weatherproof IP67 housing
- Frost resistant
- Operating temperature: -20° C to +50° C

Technical specifications PlantControl CX

- Large LCD-Display / USB interface
- Up to 100.000 data sets can be recorded
- Power supply: 8 AA rechargeable batteries (inclusive), in combination with mains (110/230V) or solar cell 12W
- Dimensions: 29 x 23 x 15 cm

Technical specifications soil moisture sensor

- Can be used in all soil types
- Power supply: 2 AA 1.5 V batteries
- Battery life span approx. 1 year depending on measuring cycle
- Dimensions: 4 x 4 x 29 cm (shortest version)
- Available length:
 - Stick version: 18/35/60/100 cm
 - Cable version: 60/250 cm (other length available on request)

Measurement data

- Moisture display:
 - In relative %-units or
 - hPa suction pressure for 6 standard soils
- Measuring range soil moisture (at a soil temperature between 2° C to +37° C*):
 - Relative %-units: 0 - 100%
 - hPa: 0 – 400 hPa high sensitivity / > 400 - 800 hPa lower sensitivity
- Measuring range soil temperature: -20°C to +50° C
- Measuring accuracy:
 - Soil moisture: +/- 3%
 - Soil temperature: +/- 0.3° C
- Reading accuracy:
 - Soil moisture in relative %: 1%
 - Soil moisture in hPa: 1hPa
 - Soil temperature: 0.1 °C

* Sensors for soil moisture measurements at soil temperature range between 2° C to +50° C on request

